

GCB-2040

Datasheet



GCB-2040 is the lowest frequency available in the dual frequency GCB antenna models. This antenna combines the excellent penetration capabilities of the GCB-200 with a good resolution achieved with the GCB-400, all in one package.

This is the perfect choice for companies that don't have the luxury of spending too much time in the field and want to collect as much data as possible in a limited time period. This antenna will suffice for all your applications requiring greater depth without the compromise of losing the top resolution involved with lower frequency antennas.

As with all other antennas manufactured by Geoscanners this antenna is fully compatible with the rest of the Geoscanners products. Despite its wide area of applications this antenna is remarkably light and compact.

The GCB-2040 is the perfect choice for the customers oriented to different types of utility and environmental surveys with varying depth and resolution requirements. It provides the resolution quality expected from the GCB-400 for shallow utilities, but it will also extend the possible depth range of application with the data coming from the 200MHz center frequency onboard.



GEOSCANNERS
geophysical survey solutions

www.geoscanners.com | info@geoscanners.com

REV: EN180731-02



Area of Application

- Geotechnical and environmental
- Utility, UST and void detection
- Archeological investigations
- Forensics

Mechanical and Environmental Specifications

Dimensions LxWxD (mm/inches)	583x335x222 / 22.95x13.19x8.74
Weight (kg/pounds)	5.2 / 11.46
Fastening points LxW (mm/inches)	210x160 / 8.26x6.30
Ingress Protection	IP65
Operating Temperature (°C / °F)	from -25 up to +40 / from 14 up to 104
Relative Humidity (%)	99 (NC)

Electrical Specifications*

Antenna Type	Quarter Wavelength Bowtie
Shield Type	Top and Side Shield
Distance between the TX and RX (mm/inches)	350 / 13.77 (200MHz), 115 / 4.52 (400MHz)
Feed point impedance (Ohms)	347 (200MHz), 352 (400MHz)
Transmitted Pulse Amplitude (Volts)	100
Receiver Sensitivity (µVolts)	14
Dynamic Range (dB)	137
Antenna Bandwidth (at 10dB)	99%
Antenna Center frequency (MHz at 10dB BW)	210 (200MHz), 380 (400MHz)
Survey Wheel Output Voltage (Volts)	5.01

*Parameters are specified in brackets only when they differ

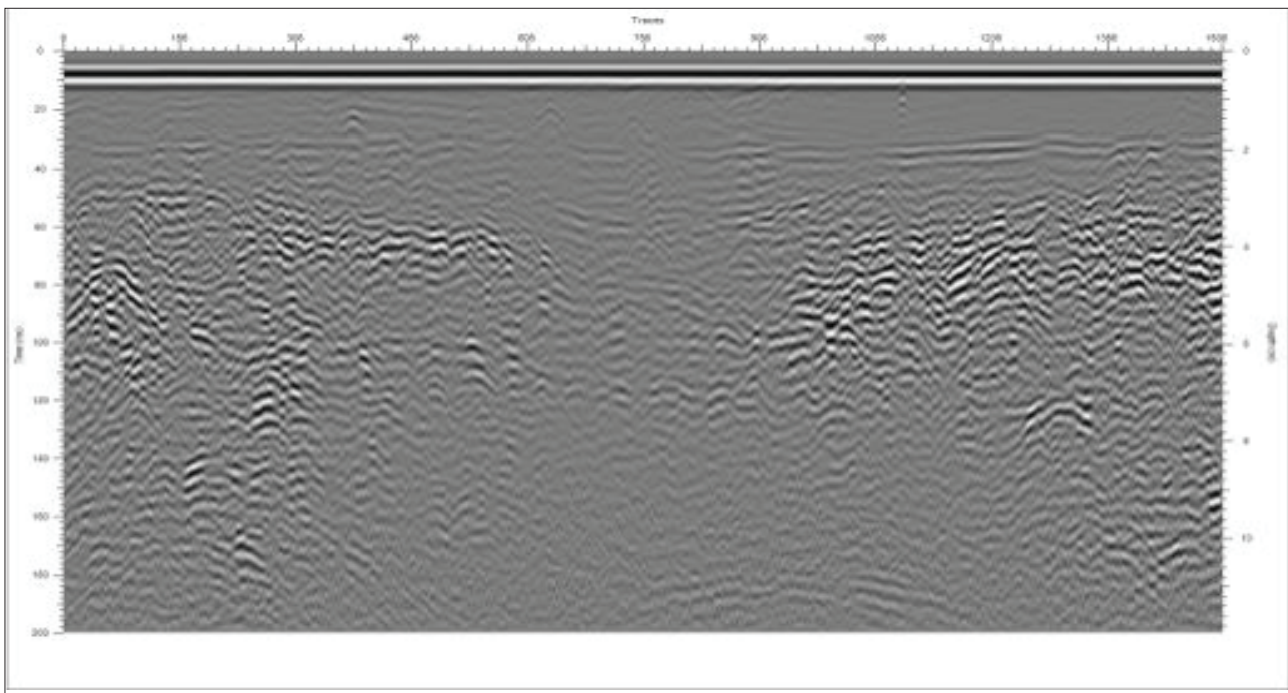
Recommended Specifications

Pulse repetition Frequency, PRF (kHz)	≥50 (200MHz), ≥100 (400MHz)
Scan Rate, Traces/Second	100
Range (ns), (depends on soil penetration)	32 - 256 (200MHz), 25.6 - 128 (400MHz)
Low Pass Filter Cut-Off Frequency (MHz)	420 (200MHz), 840 (400MHz)
High Pass Filter Cut-Off Frequency (MHz)	90 (200MHz), 360 (400MHz)
Gain	Adjust to 75% Swing

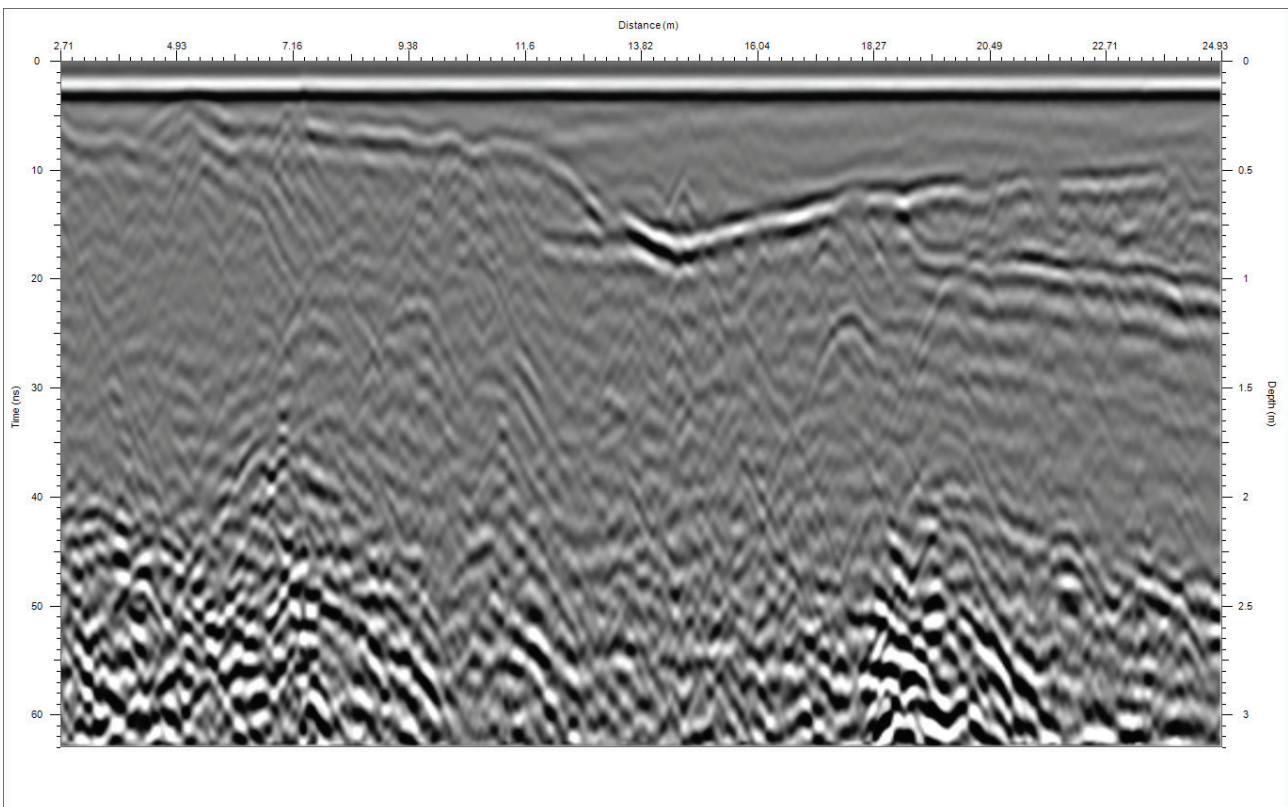
Accessories*

- Tray S37 antenna tray with belts
- SVC-820 4-wheel survey cart
- GSH-490 rough terrain survey trailer

*Accessories are not included



1. Typical data from the 200MHz channel.



2. Typical data from the 400MHz channel.

Note: The information in this datasheet is based on the latest information at the time of publication. Geoscanners AB® reserves the right to make changes at any time, without notice to color, specifications, accessories, materials and models. For more information contact the Geoscanners AB Sales Department +46(0)92153020. ©2015 Geoscanners AB, Sweden.

Terms of use

Geoscanners AB has made all reasonable efforts to ensure that all information provided through this document is accurate at the time of inclusion; however, there may be inadvertent and occasional errors for which Geoscanners AB apologizes.

Geoscanners AB accepts no liability for any inaccuracies or omissions in this document and any decisions based on information contained in this document are the sole responsibility of the reader. Geoscanners AB accepts no liability for any direct, special, indirect, or consequential damages, or any other damages of whatsoever kind, resulting from whatever cause through the use of any information obtained either directly or indirectly from this document.

This document may not be copied, reproduced, re-published, downloaded, posted, broadcast or transmitted in any way except for your own personal use. Any other use requires the prior written permission of Geoscanners AB. You agree not to adapt, alter or create a derivative work from any of the material contained in this document or use it for any other purpose other than for your personal use. You agree to use this document only for lawful purposes, and in a manner which does not infringe the rights of, or restrict or inhibit the use and enjoyment of this document by any third party.

This document and the information, names, images, pictures, logos and icons regarding or relating to Geoscanners AB, its products and services (or to third party products and services), is provided "AS IS" and on an "IS AVAILABLE" basis without any representation or endorsement made and without warranty of any kind whether express or implied, including but not limited to the implied warranties of satisfactory quality, fitness for a particular purpose, non-infringement, compatibility, security and accuracy.

In no event will Geoscanners AB be liable for any damages including, without limitation, indirect or consequential damages, or any damages whatsoever arising from use or loss of use, data, or profits, whether in action of contract, negligence or other tortious action, arising out of or in connection with the use of this document. Geoscanners AB does not warrant that the functions contained in the material contained in this document will be uninterrupted or error free, that defects will be corrected. The names, images and logos identifying Geoscanners AB and their products and services are proprietary marks of Geoscanners AB. Nothing contained herein shall be construed as conferring by implication or otherwise any license or right under any trade mark or patent of Geoscanners AB, or any other third party.

If there is any conflict between these Terms and Conditions and rules and/or specific terms of use appearing in this document relating to specific material then the latter shall prevail.

If any of these Terms and Conditions should be determined to be illegal, invalid or otherwise unenforceable by reason of the laws of any state or country in which these Terms and Conditions are intended to be effective, then to the extent and within the jurisdiction which that Term or Condition is illegal, invalid or unenforceable, it shall be severed and deleted from this clause and the remaining terms and conditions shall survive, remain in full force and effect and continue to be binding and enforceable.

These Terms and Conditions shall be governed by and construed in accordance with the laws of Sweden. Disputes arising here from shall be exclusively subject to the jurisdiction of the courts of Sweden.

If these Terms and Conditions are not accepted in full, the use of this document must be terminated immediately.