



Geoscanners AB®



## AKULA 9000

The AKULA 9000 is a Ground Penetrating Radar control unit for antennas with center frequencies up to 600MHz. This unit provides full control over all the parameters involved in making a fast survey successful and at the same time presents a set of tools in a very intuitive user interface.

Main features:

1. Very low power consumption, more than four hours of work on a single battery.
2. Easy integration of GPS coordinates and GPR data into a single file.
3. No limitations on file length, as long as your hard drive has space, AKULA 9000 will continue collecting data.
4. Easy user interface.

### MAIN SPECIFICATIONS:

Survey range	32 up to 1024 ns
Pulse Repetition Frequency, PRF	100 and 200kHz
Scan rate	1 to 100 scans/second
Gain function and levels	Linear gain, -20 to +60dB, 6 points
Vertical Filters	Low-pass and High-pass IIR and FIR
Horizontal Filters	Stacking, Background Removal
Operating Modes	Point, Survey Wheel and Time
Data Storage	16-bit data in proprietary GSF format
Weight	2.5kg (without the laptop)
Dimensions LxWxD	305x240x55 mm

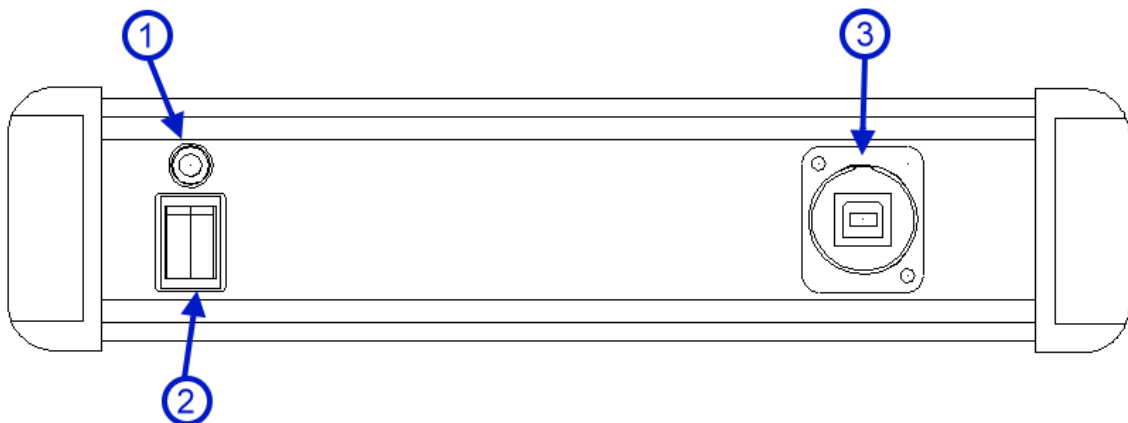
## STANDARD COMPONENTS:

1. Control Unit AKULA 9000.
2. Netbook with GAS<sup>tm</sup> and GPRSoft<sup>tm</sup> Standard Edition installed.
3. 3 meters control cable.
4. USB Cable.
5. Power Cable
6. Led Acid Battery 7.5A/h
7. Led Acid Battery Charger
8. Instruction manual
9. Warranty Statement.

## OPTIONAL COMPONENTS:

1. Panasonic Toughbook CF-19 with GAS<sup>tm</sup> and GPRSoft<sup>tm</sup> Standard Edition installed.
2. NiMeH battery.
3. NiMeH battery charger.
4. GPRSoft<sup>tm</sup> PRO Edition with 3D module.
5. 6 meters control cable.

## AKULA 9000 CONTROLS:



*Fig. 1 Akula 9000 front view*

1. LED ON/OFF indicator.
2. ON/OFF button.
3. USB Connector.

4. Power Connector.
5. Survey Wheel Connector.
6. Control Cable Connector.

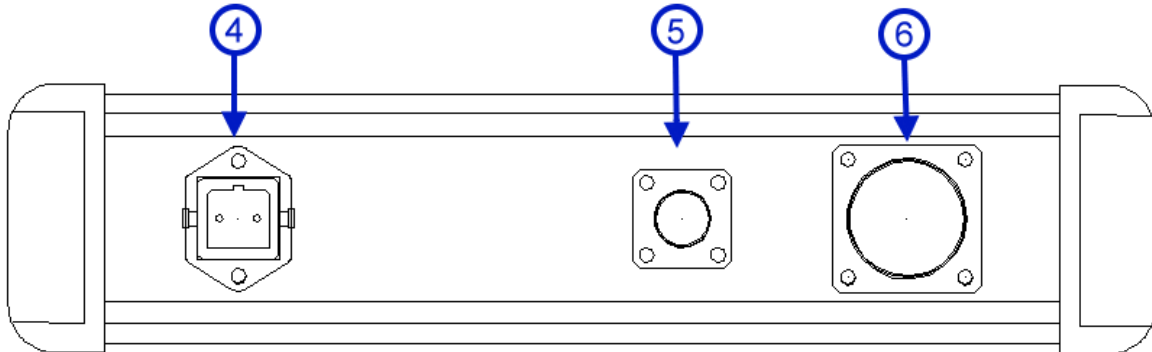


Fig. 2 Akula 9000 back view

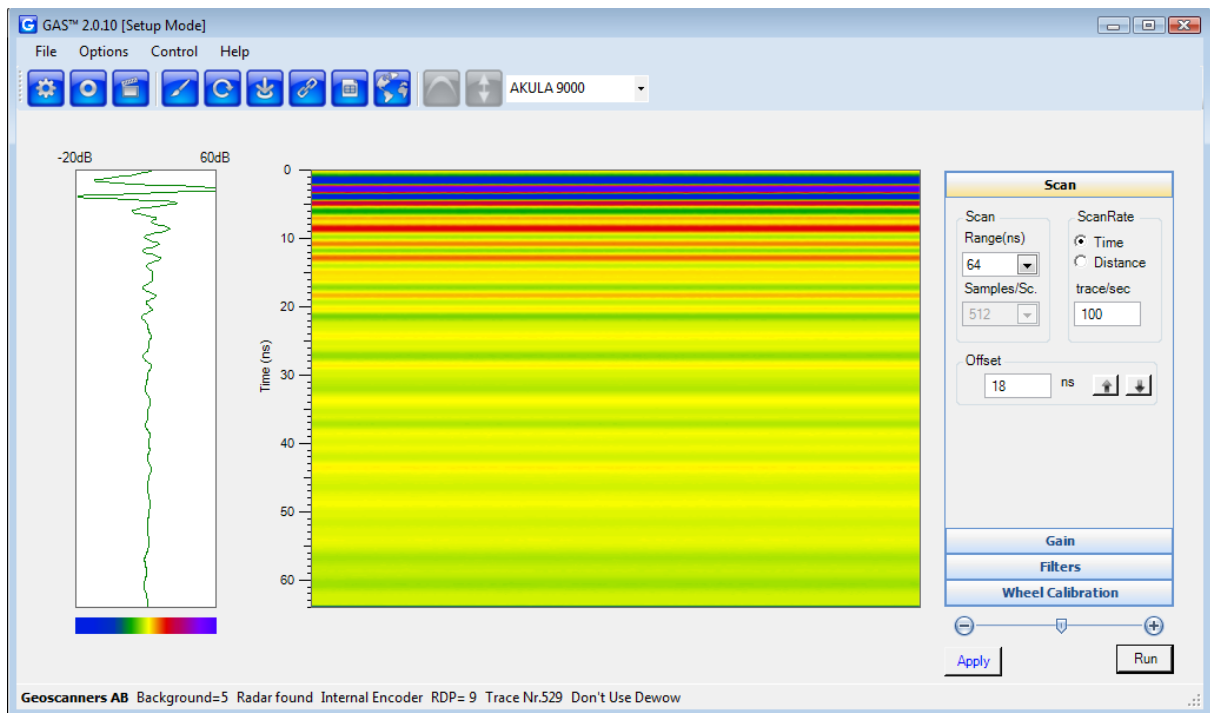


Fig. 3 Akula 9000 control Software GAS™