



Geoscanners AB®



BA-1000

The BA1000 is a GPR borehole antenna for applications requiring access to the features via a nearby borehole. The cleaner signal and higher penetration, when compared to the competition, makes it an ideal complement for applications requiring borehole antennas with higher frequency operating bandwidth and therefore higher resolution. This antenna is also one of the few models available on the market compatible with the GSSI ground penetrating radars as well.

Area of applications:

- Tunnelling
- Mining
- Borehole surveys in general

Mechanical specifications:

Dimensions ØxL (mm/inches)	Φ38x655 / Φ1.5x25.78
Weight (kg/pounds)	1.2 / 2.64
Distance between the Tx and Rx (mm/inches)	156 / 6.14
Fastening points LxW (mm/inches)	GTP901
Ingress Protection ^{note1}	IP68

Note1: under 10 bar pressure and no more than 6 hours

Electrical specifications

Antenna Type	Bowtie
Shield Type	Unshielded
Absorber Type	N/A
Total Load (Ohms)	292
Transmitted Pulse Amplitude (Volts)	24
Receiver Sensitivity (μ Volts)	6
Antenna Bandwidth (at 10dB)	104.9 _p
Antenna Center frequency (MHz at 10DB BW)	750 _p
Survey Wheel Output Voltage (Volts)	5.01
Operating Temperature ($^{\circ}$ C / $^{\circ}$ F)	-25....+40 / 14....104

Recommended settings:

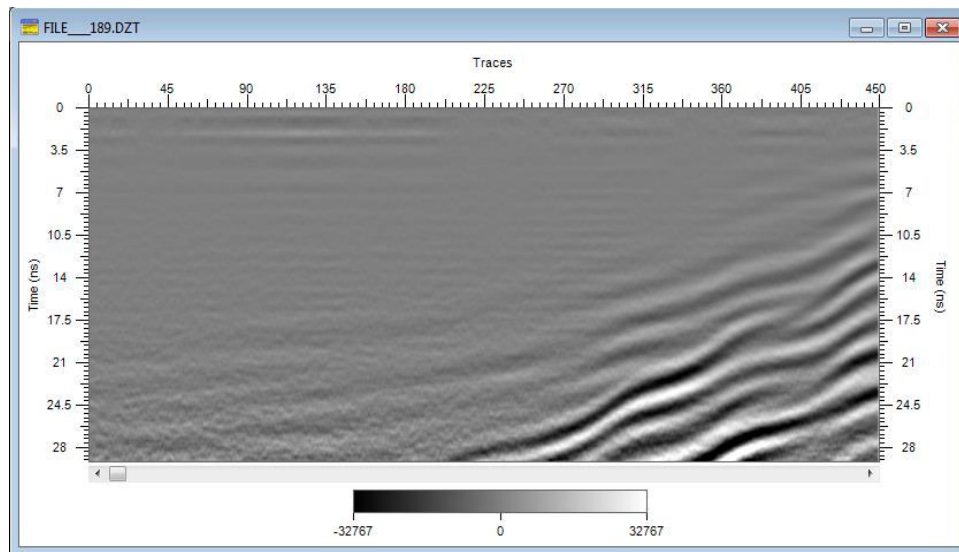
Pulse repetition Frequency, PRF (kHz)	\geq 100
Scan Rate, Scans/Second	100
Range (ns), (depends on soil penetration)	5-30
Low Pass Filter Cut-Off Frequency (MHz)	2000
High Pass Filter Cut-Off Frequency (MHz)	500
Gain	Adjust to 75% Swing

Application Hints:

When doing the borehole surveys, sometimes there is a need for higher resolution to be able to interpret smaller objects and anomalies. BA1000 is a borehole antenna with high enough frequency to provide higher details about the media and objects surrounding the borehole. Like with any other GPR antenna, the increase of the frequency, and thus the resolution, will decrease the range of penetration. All care was taken to keep the dimensions of the antenna industry friendly, which means that after you get the standard drilling tool out, you can easily push the antenna in the hole. GPR information gathered in this way will expand the information response around your borehole.

It is always important to keep in mind that the borehole antennas are unshielded and non directive. The interpretation of the GPR data collected with a borehole antenna can provide the distance to a specific object and the depth position in regard to lowering the antenna through a borehole. The true direction (azimuth) of the object on a certain radius can only be determined by doing a cross hole survey or known information from a different method. Cross hole surveys are done from

multiple boreholes either with two antennas in true bistatic mode doing the tomography of the area or collecting the data about an area from more than one borehole and afterwards triangulating the objects true position from multiple data interpretations.



Multiple thin layers are easy to interpret from the data

Terms of use:

Geoscanners AB has made all reasonable efforts to ensure that all information provided through this document is accurate at the time of inclusion; however, there may be inadvertent and occasional errors for which Geoscanners AB apologizes.

Geoscanners AB accepts no liability for any inaccuracies or omissions in this document and any decisions based on information contained in this document are the sole responsibility of the reader. Geoscanners AB accepts no liability for any direct, special, indirect, or consequential damages, or any other damages of whatsoever kind, resulting from whatever cause through the use of any information obtained either directly or indirectly from this document.

This document may not be copied, reproduced, re-published, downloaded, posted, broadcast or transmitted in any way except for your own personal use. Any other use requires the prior written permission of Geoscanners AB. You agree not to adapt, alter or create a derivative work from any of the material contained in this document or use it for any other purpose other than for your personal use. You agree to use this document only for lawful purposes, and in a manner which does not infringe the rights of, or restrict or inhibit the use and enjoyment of this document by any third party.

This document and the information, names, images, pictures, logos and icons regarding or relating to Geoscanners AB, its products and services (or to third party products and services), is provided "AS IS" and on an "IS AVAILABLE" basis without any representation or endorsement made and without warranty of any kind whether express or implied, including but not limited to the implied warranties of satisfactory quality, fitness for a particular purpose, non-infringement, compatibility, security and accuracy.

In no event will Geoscanners AB be liable for any damages including, without limitation, indirect or consequential damages, or any damages whatsoever arising from use or loss of use, data, or profits, whether in action of contract, negligence or other tortious action, arising out of or in connection with the use of this document. Geoscanners AB does not warrant that the functions contained in the material contained in this document will be uninterrupted or error free, that defects will be corrected. The names, images and logos identifying Geoscanners AB and their products and services are proprietary marks of Geoscanners AB. Nothing contained herein shall be construed as conferring by implication or otherwise any license or right under any trade mark or patent of Geoscanners AB, or any other third party.

If there is any conflict between these Terms and Conditions and rules and/or specific terms of use appearing in this document relating to specific material then the latter shall prevail.

If any of these Terms and Conditions should be determined to be illegal, invalid or otherwise unenforceable by reason of the laws of any state or country in which these Terms and Conditions are intended to be effective, then to the extent and within the jurisdiction which that Term or Condition is illegal, invalid or unenforceable, it shall be severed and deleted from this clause and the remaining terms and conditions shall survive, remain in full force and effect and continue to be binding and enforceable.

These Terms and Conditions shall be governed by and construed in accordance with the laws of Sweden. Disputes arising here from shall be exclusively subject to the jurisdiction of the courts of Sweden.

If these Terms and Conditions are not accepted in full, the use of this document must be terminated immediately.